

9. Average Outgoing Quality (AOQ) Data

1. Calculation Equation:

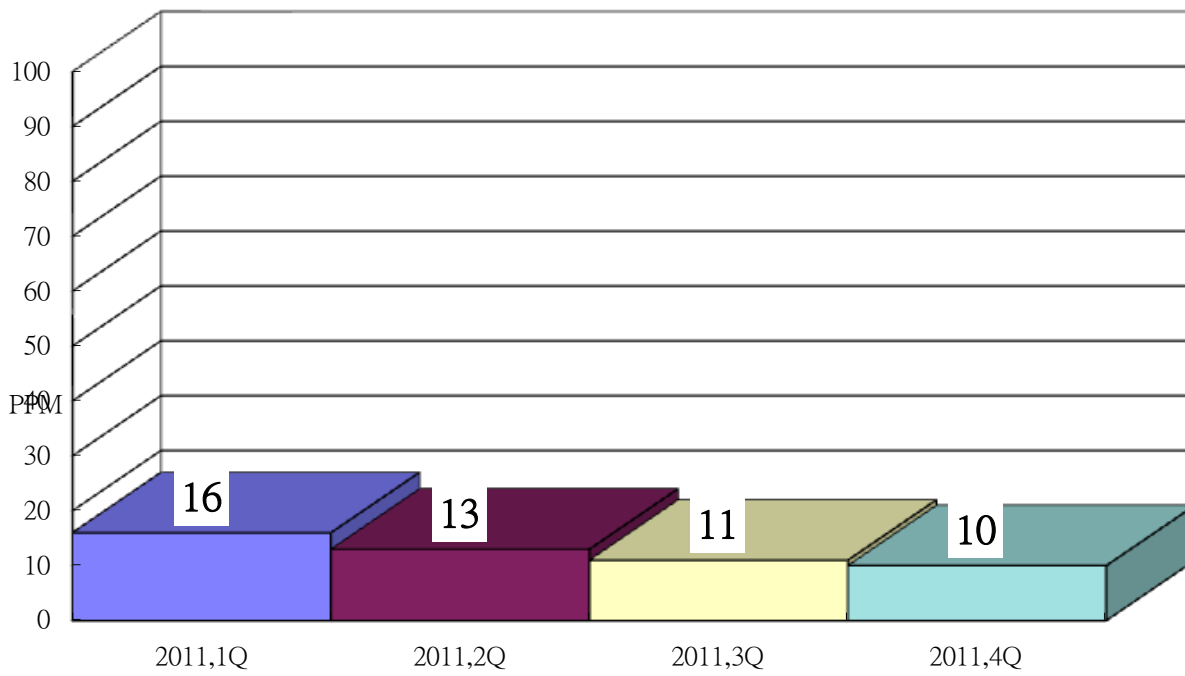
$$\text{AOQ} = (\text{Process Average}) \cdot (\text{Probability of Acceptance}) \cdot (10^6) \text{ (PPM)}$$

- Process Average = Total Projected Reject Device / Total Number of Devices
- Projected Reject Device = (Defects in Samples / Sample Size) • Lot Size
- Total Number of Devices = Sum of units in each submitted lot
- Probability of Acceptance = 1 - Number of Lots Rejected / Number of lots Tested
- 10^6 = Conversion to parts per million (PPM)
- 10^9 = Conversion to parts per billion (PPB)

2. Data

2.1 DRAM Products

DRAM Electeical Test AOQ Trend Chart



2.2 NVM Products

NVM Electeical Test AOQ Trend Chart

